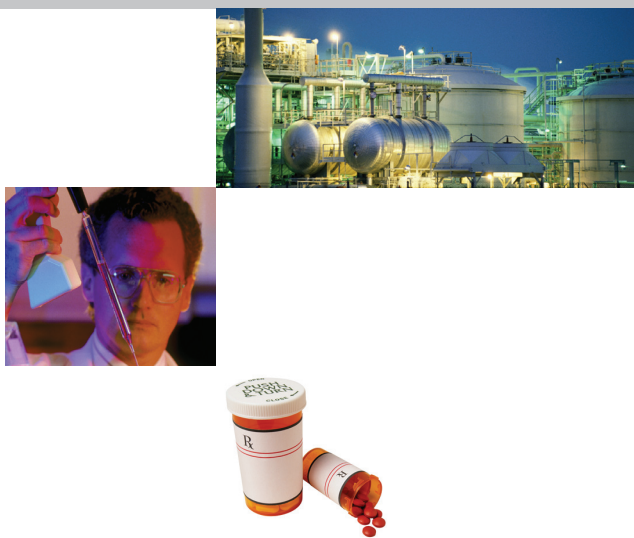


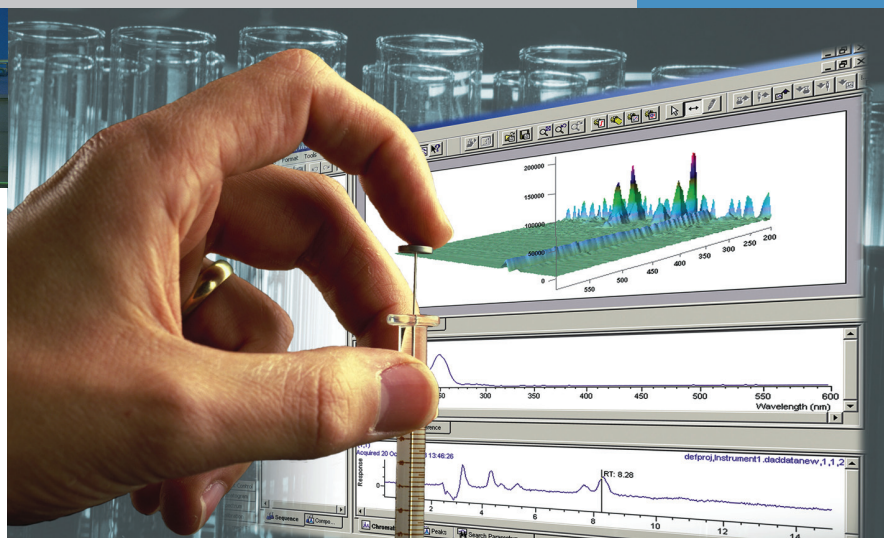
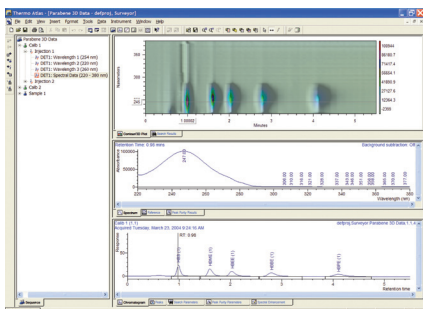
Count on Thermo Scientific Atlas CDS to control a variety of instruments from multiple vendors in a single software solution. Enterprise-capable, scaling from one workstation to cross-WAN Citrix deployments, Atlas is ideal for networked, secure and regulated environments.

## Thermo Scientific Atlas CDS™

A Scalable, Compliant and Integrated Chromatography Data System



Atlas' advanced spectral graphics enable users to maximize the amount of information gained from their data. Data scales change as a user zooms into an area of interest, providing clear visible control between noise and peak impurities.



### Challenge

Companies today face difficulties in maintaining a technology edge while pursuing lower total cost of ownership and higher productivity. Laboratories need to be able to choose the best instrument for their application, yet maintaining multiple software products for each workstation presents an unnecessary burden on IT. Standardizing on an enterprise-wide software solution that supports a heterogeneous instrument environment provides the best of both worlds.

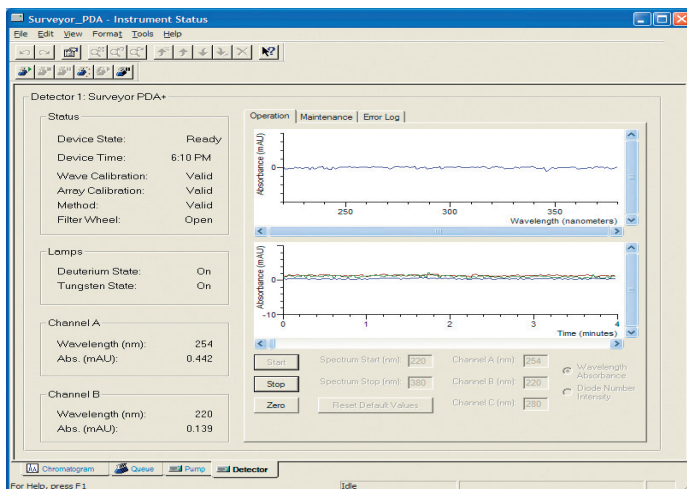
In addition, Life Science, Food and Beverage and other companies in regulated industries are challenged with balancing the validation costs - in time, resources and funding - of having to regularly update their software with the advances these updates provide. Customers want to take advantage of the latest technology and benefits provided by new instruments, without having to update individual software associated with the hardware. Standardizing

on a CDS capable of meeting the enterprise's needs can save considerably over the expense of implementing and validating multiple instrument-specific or lab-based software solutions. Additionally, training and IT resources are reduced, and productivity increases, when users are working on a standard system.

### Count on Thermo Scientific

Developed as an enterprise chromatography data system, Thermo Scientific Atlas CDS reduces the complexity and expense of implementation, validation, maintenance and training when compared to multiple control software systems for various manufacturers' instruments. Atlas can interface with liquid, capillary gas and packed gas chromatography systems, and capillary electrophoresis instruments manufactured by a variety of vendors, using an Instrument Manager wizard to facilitate easy set-up with full, bi-directional control. Not only do customers benefit from

## ATLAS Chromatography Data System



Atlas Instrument Status panel for the Surveyor Plus PDA graphically displaying spectral and multiple channel (3) acquisition. The interface enables deeper instrument operation such as Direct Control, Maintenance and Error Logs. These are requirements a User needs to calibrate and maintain their instrument (a differentiator for the Atlas Enterprise system running third party instruments).

reduced deployment costs, they also realize process harmonization from consistent reporting and shared data achieved only with a single enterprise system. In addition, Atlas is designed to release instrument control separate from the core, ensuring that the laboratory can take advantage of the latest technology without undergoing a costly upgrade.

### Increasing Lab Productivity

Atlas is a full-featured CDS that fits the workflow of any laboratory. Designed in a partnership with chromatographers, Atlas is built with the chromatographer's workflow in mind. Workbook templates and such wizards as Quick Start and Start Run enable users to quickly and easily enter information to run samples, while final results can easily be obtained in the required format with user-defined fields and calculations. Depending on roles and responsibilities, users gain access to CDS data relevant to them, which focuses training on the individual user's role instead of the entire system. Atlas is user-friendly and intuitive because its interface is built on the Microsoft® Office style guide for multiple functions – from opening files and creating sequences to printing documents and developing methods.

### Networked for Efficiency

Atlas interfaces easily with a number of key applications, including Laboratory Information Management Systems (LIMS), to ensure workflow compatibility. Atlas results can interactively or automatically be exported to a LIMS while LIMS-generated work requests and results can be imported into Atlas. This graphics-rich, bi-directional interface is seamless with Thermo Scientific SampleManager LIMS™ for process industries and Thermo Scientific Darwin LIMS™ for pharmaceutical manufacturing. Thermo Fisher Scientific is the only vendor providing enterprise-class, tightly integrated LIMS and CDS.

### State of the Art Hardware

For users who need 24-by-7 operation or who are concerned with the security risk of placing critical data directly on laboratory PCs, Atlas provides a better solution. The Thermo Scientific 247 Instrument Controller is a “no moving parts,” cross-WAN-enabled networked appliance. It is designed to ensure a robust solution in the laboratory by eliminating the typical failure points for a PC – the moving parts. Powered by Windows XP Embedded, it only runs instrument control software. If the laboratory wants to take advantage of new instrument control software, the Instrument Control Extension only needs to be installed on the Atlas Server. The 247 IC has a mechanism to automatically update itself from the server with the latest instrument control.

### Partnering with Thermo Fisher Scientific

Thermo Fisher Scientific is the worldwide leader in laboratory software and related services, providing enterprise-wide, multi-laboratory Thermo Scientific solutions that have become the corporate standard at leading companies. To support our customers around the globe, we provide implementation, validation, training, maintenance and support from the industry's largest worldwide informatics services network.

Atlas joins our extensive portfolio of Thermo Scientific software solutions, including SampleManager LIMS™ for enterprise applications in multiple industries; Darwin LIMS™ for pharmaceutical manufacturing R&D and QA/QC; Watson LIMS™, the industry standard for bioanalytical laboratories; Galileo LIMS™ for in vitro ADME studies in early stage drug discovery and development; Nautilus LIMS™ for discovery and R&D; the Enterprise Pharmacology (EP) Series™ and Kinetic™ analytical database tools for pharmacokinetics and pharmacodynamics; and GRAMS spectroscopy analysis software.

### For More Information

Visit us on the web at [www.thermoscientific.com/informatics](http://www.thermoscientific.com/informatics) or call +1 866 463 6522 (US) or +44 161 942 3000 (Intl).