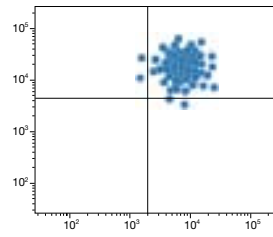
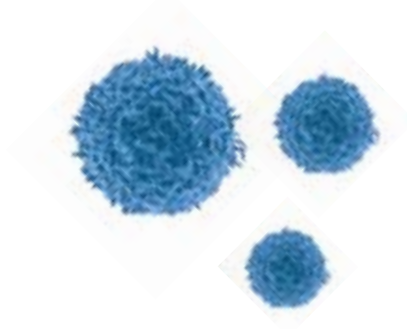




Positive Cell Isolation



Flow-compatible, tube-based isolation of any cells from any species

Dynabeads® FlowComp™ Flexi

- Combine with your antibody of choice to isolate any cell type
- Simple and gentle tube-based method yielding bead-free cells
- Use isolated cells in flow cytometry or any other downstream application
- No risk of your results being affected by the isolation method

Flexible

Dynabeads® FlowComp™ Flexi is a versatile tool for positive cell isolation, giving you the flexibility to isolate practically any cell type from any species using your own antibody.

Gentle

FlowComp™ technology is a gentle, tube-based system for isolating bead-free cells. This technology minimizes the risk of your cells being negatively affected by the isolation method. There is no need for columns, nor exposure to biodegradable particles releasing iron oxides and dextrans, a potential problem recognized in work with biodegradable nanoparticles.^{1,2}

Applications

Dynabeads® FlowComp™ Flexi was developed for flexible cell isolation from various starting samples such as peripheral blood mononuclear cells (PBMCs) and single-cell suspensions from lymph nodes, spleen, or other tissues. This technology has been successfully used to isolate a number of cell subsets including human and mouse T cells, B cells, NK cells, monocytes, and endothelial cells.



Principle of isolation

FlowComp™ Flexi technology is based on a modified version of biotin–streptavidin capture, where DSB-X™ biotinylated antibodies bound to your target cells are captured by modified streptavidin-coupled Dynabeads® (Figure 1). The release buffer ensures subsequent gentle release of the beads from the cells. Positively isolated, bead-free cells are ideal for direct analysis by flow cytometry and use in any downstream application.

Dynabeads® FlowComp™ Flexi supplies you with everything you need for DSB-X™ biotinylation of your antibodies and subsequent isolation of your cell type of interest.

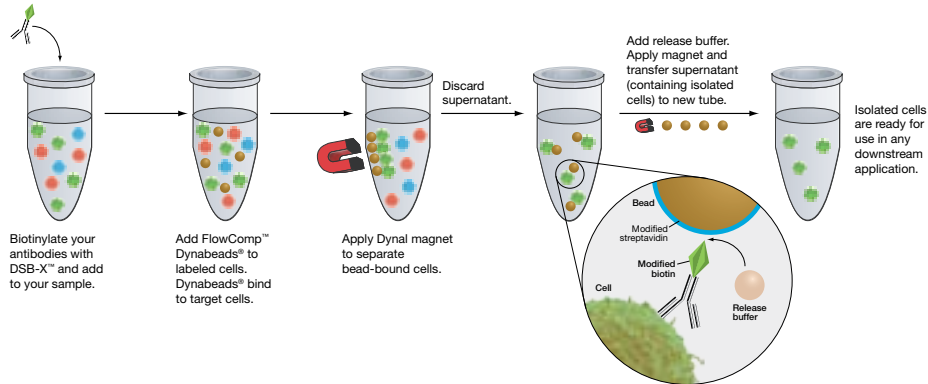


Figure 1—Overview of the Dynabeads® FlowComp™ Flexi isolation procedure.

Ordering information

Product	Quantity	Cat. no.
Dynabeads® FlowComp™ Flexi—including beads and one DSB-X™ Biotin Protein Labeling Kit	1 kit*	110-61D
Related products		
Dynabeads® FlowComp™ Human CD4	1 kit*	113-61D
Dynabeads® FlowComp™ Human CD8	1 kit*	113-62D
Dynabeads® FlowComp™ Mouse CD4	1 kit*	114-61D
Dynabeads® FlowComp™ Mouse CD8	1 kit*	114-62D
Dynabeads® FlowComp™ Human NKp46	1 kit*	113-64D
Dynabeads® FlowComp™ Mouse CD4+CD25+ Treg Cells	1 kit*	114-63D
Dynabeads® FlowComp™ Mouse CD49b	1 kit*	114-64D
DynaMag™-15 (holds 4 standard 15 ml tubes, alternatively 4 x 5 ml tubes used in flow cytometry)	1 unit	123-01D
DynaMag™-50 (holds 2 x 5–50 ml tubes)	1 unit	123-02D
DSB-X™ Biotin Protein Labeling Kit	5 labelings	D20655
Antibodies	See www.invitrogen.com/antibodies	

* Each kit contains 3 ml of Dynabeads®, sufficient for processing 2 x 10⁹ cells, except 114-63D, which will process 1 x 10⁹ cells. For current prices, visit www.invitrogen.com.

Learn more about the best starting point for your cell research at www.invitrogen.com/cellisolation.

References

1. Pisanic, T.R., II et al. (2007) *Biomaterials* 28:2572–2581.
2. Berry, C.C. et al. (2004) *Biomaterials* 25:5405–5413.

Dynal® provides magnetic separation technology that brings significantly greater reproducibility and flexibility to cell and biomolecule isolation.

