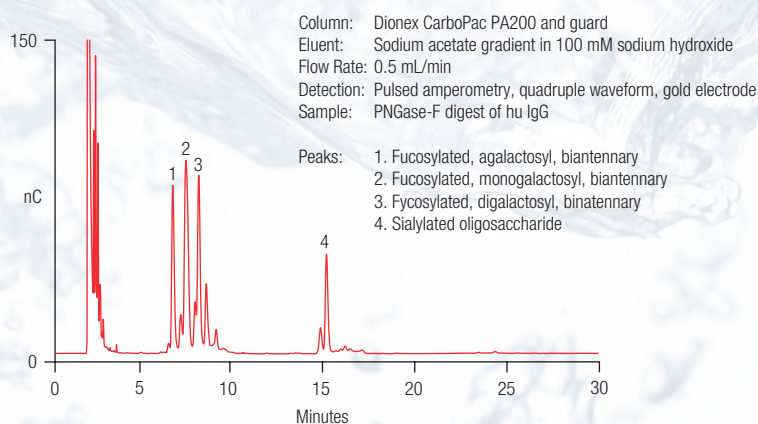


Thermo Scientific Dionex CarboPac PA200 Column

Thermo Scientific™ Dionex™ CarboPac™ HPLC columns for high-resolution oligosaccharide mapping and analysis:

- Predictable, high-resolution separations of oligosaccharides released from glycoproteins
- Neutral and sialylated *N*-linked oligosaccharides from glycoproteins
- Oligosaccharides with monosaccharide linkage isomerism
- Linear polysaccharide profiling
- Desalted fraction collection

Human Polyclonal IgG *N*-Linked Oligosaccharides Separated on the Dionex CarboPac PA200 Column



Predictable, High-Resolution Separations of Oligosaccharides Released from Glycoproteins

There is a significant and increasing demand for reproducible, fast, and simple methods in the biotechnology and pharmaceutical industry for the profiling of oligosaccharides released from glycoprotein therapeutics. This demand for carbohydrate analysis is also apparent in the food industry where the need for fast, high-resolution profiling of homologous sugar series such as inulins, amylopectins, and maltooligosaccharides is evident. Although a variety of HPLC approaches are proposed for these applications, in general most prove inadequate for separating complex mixtures and are limited by their nonspecific nature and low limits of detection.

The Dionex CarboPac PA200 column is a nonporous, high-efficiency, polymeric anion-exchange column that provides the highest resolution available for oligosaccharide mapping and analysis, using a technique known as high-performance anion-exchange (HPAE) chromatography with pulsed amperometric detection (PAD). The resin consists of 5.5 μ m diameter nonporous beads covered with a fine layer of functionalized MicroBead™ latex. This pellicular resin structure permits excellent mass transfer, resulting in high-resolution chromatography and rapid reequilibration. The 3 \times 250 mm format provides fast separations and the 0.5 mL/min recommended flow rate results in significant savings in eluent consumption.

The introduction of HPAE-PAD has, revolutionized carbohydrate analyses by allowing separations at high pH and detection without the need for derivatization. The major advantages of HPAE-PAD are (1) fast analyses, (2) ease of use—samples are directly analyzed without the need for derivatization or the need for sample cleanup, (3) low- to sub-picomole range sensitivity, and (4) high resolution (e.g., separation of anomeric and positional isomers—HPAE separates all classes of oligosaccharides according to structural features such as size, charge, composition, anomericity, and linkage isomerism).

There are several factors affecting the elution of oligosaccharides by HPAE-PAD. The empirical relationships between oligosaccharide structure and chromatographic retention are well-documented (Rohrer, *J. Glycobiology*¹):

- Fucosylated oligosaccharides are eluted ahead of their afucosylated analogs.
- As the number of mannose residues in a high mannose oligosaccharide increases, its retention time also increases.
- As the degree of branching increases, the retention time of the oligosaccharide increases (see Figure 1).
- Removal of the terminal galactose residues from a complex oligosaccharide reduces its retention time.

Neutral and Sialylated *N*-Linked Oligosaccharides from Glycoproteins

The elution of acidic sugars from the Dionex CarboPac PA200 column requires stronger eluents than those used for the elution of neutral sugars. A stronger eluent is usually accomplished by adding sodium acetate to the sodium hydroxide eluent. Sodium acetate accelerates the elution of strongly bound species without compromising selectivity and without interfering with pulsed amperometric detection. Figures 2 and 3 show the separation of neutral oligosaccharides on both the Dionex CarboPac PA100 and Dionex CarboPac PA200 columns. The higher efficiency of the Dionex CarboPac PA200 column is very apparent in these chromatograms, not only in terms of the increased peak height of the major peaks, but also in the detail of the minor peaks.

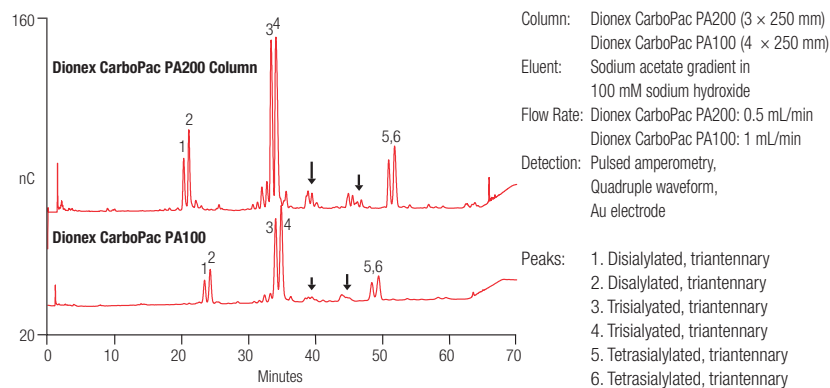


Figure 1. Fetuin oligosaccharide profile.

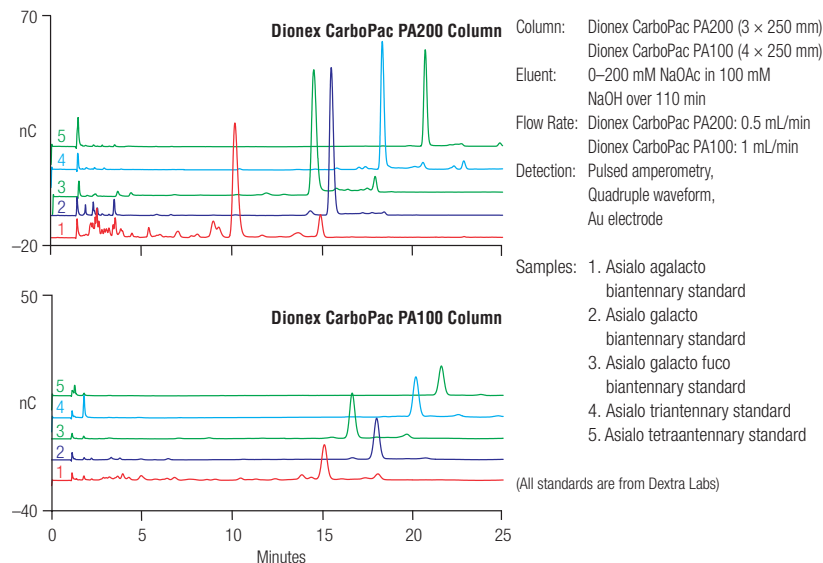


Figure 2. Dionex CarboPac PA200 column vs Dionex CarboPac PA100 column. Separation of neutral *N*-linked oligosaccharides (complex neutral structures).

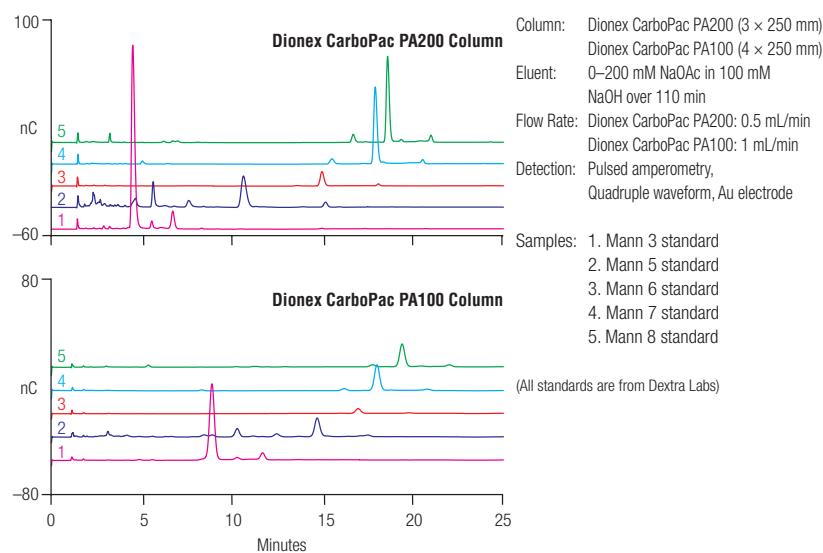


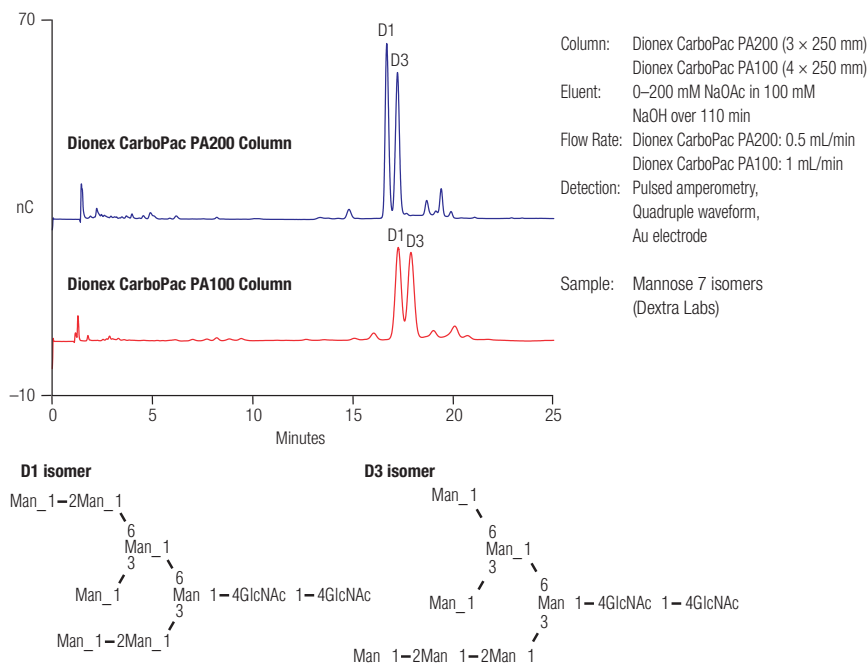
Figure 3. Dionex CarboPac PA200 column vs Dionex CarboPac PA100 column. Separation of neutral (high mannose) *N*-linked oligosaccharides.

Oligosaccharides with Monosaccharide Linkage Isomerism

High-resolution separations can be obtained based on linkage isomerism, which is difficult to achieve using other chromatography technologies. Under alkaline conditions, the technique resolves these species, not only by sugar content, but also according to where the sugars are attached. Figure 4 shows the separation of the D1 and D3 mannose 7 isomers. Figure 4 also illustrates the difference in the structures. The isomers are baseline resolved on the Dionex CarboPac PA200 column, and other minor peaks are also clearly resolved.

Linear Polysaccharide Profiling

Inulin and fructooligosaccharides (FOS) are increasingly being used as functional food ingredients. Chain-length distribution profiles of commercial products such as those derived from inulin can be determined using HPAE-PAD with gradient elution (see Figure 5). Commercial food ingredient products derived from the lower-molecular-weight fractions of inulin (DP3-20) can be determined by AOAC Method 997.08, although a more direct method has been developed² that allows commercially available FOS and inulin products to be identified and quantified directly in a variety of foods by HPAE-PAD.



$C_{50}H_{90}N_2O_{46}$ = FW1559.41

Figure 4. Dionex CarboPac PA200 column vs Dionex CarboPac PA100 column. Separation of mannose 7 D1 and D3 isomers.

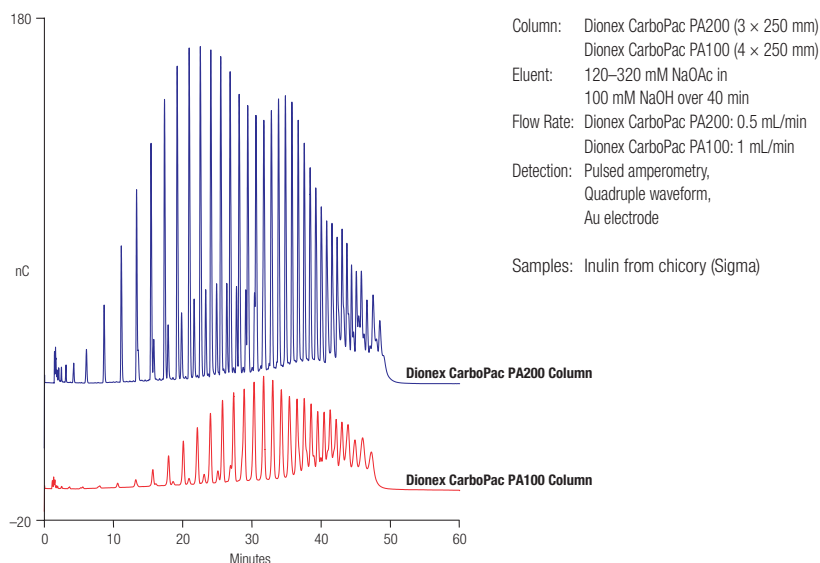


Figure 5. Inulin Profiles: Dionex CarboPac PA200 column vs Dionex CarboPac PA100 column.

Fraction Collection

The Thermo Scientific™ Dionex™ ERD™ 500 Electrolytically Regenerated Desalter is a membrane device designed for users of HPAE-PAD who need to collect and further analyze carbohydrate samples. Desalted samples are ready for lyophilization without dialysis. Greater than 99% of the sodium ions in eluents that contain up to 0.35 M sodium ions flowing at a rate of 1 mL/min will be removed by the Dionex ERD 500 desalter.

Placed after the electrochemical detector, the Dionex ERD 500 desalter exchanges sodium ions for hydronium ions. This process changes the sodium hydroxide and sodium acetate eluents to water and acetic acid immediately after leaving the detector cell. Collected fractions can then be lyophilized, leaving the pure carbohydrate sample ready for further manipulation. These samples are suitable for enzymatic and chemical digestion, NMR, mass spectrometric, or further chromatographic analysis.

Guaranteed Performance

The unique pellicular resin of the Dionex CarboPac PA200 columns offers exceptional selectivity and stability over the entire pH range. Its highly cross-linked structure ensures long column life and easy cleanup. The entire manufacturing process (resin synthesis, amination, and packing and testing of the chromatographic columns) is carefully controlled to ensure that every Dionex CarboPac PA200 column delivers reproducible performance. Dionex CarboPac PA200 columns are tested with two isomers of *N*-acetyl neuraminosyl- α -lactose to ensure lot-to-lot reproducibility.

SPECIFICATIONS

Resin Composition:	5.5 μ m diameter ethylvinylbenzene/divinylbenzene substrate (55% cross-linking) agglomerated with 43-nm MicroBead 6% cross-linked quaternary amine-functionalized latex
Anion-Exchange Capacity:	35 μ eq/column
Maximum Operating Pressure:	4000 psi (28 MPa)
Chemical Compability:	pH 0–14, 100% compatible with common HPLC solvents
Temperature Limit:	60 °C
Quality Assurance Procedure:	Separation of alpha (2,6) NANLac and alpha (2,3) NANLac isomers
Typical Operating Conditions:	2,700 psi at 0.5 mL/min (guard and analytical)
Recommended Operating Temperature:	Controlled ambient (~30 °C)
Recommended Flow Rate:	0.5 mL/min
Ionic Form Eluents:	Sodium hydroxide and sodium acetate only

Ordering Information

For more information or to place an order, contact the Thermo Scientific Dionex Products office nearest you or your local distributor. Phone numbers and addresses for worldwide subsidiaries can be found in the About Us section of www.thermoscientific.com.

Description	Part Number
Dionex CarboPac PA200 Analytical Column (3 \times 250 mm)	062896
Dionex CarboPac PA200 Guard Column (3 \times 50 mm)	062895
Dionex ERD 500 Electrolytically Regenerated Desalter (4 mm)	085087
Dionex ERD 500 Electrolytically Regenerated Desalter (2 mm)	085089

www.thermoscientific.com/chromatography

©2015 Thermo Fisher Scientific Inc. All rights reserved. ISO is a trademark of the International Standards Organization. All other trademarks are the property of Thermo Fisher Scientific and its subsidiaries. This information is presented as an example of the capabilities of Thermo Fisher Scientific products. It is not intended to encourage use of these products in any manners that might infringe the intellectual property rights of others. Specifications, terms and pricing are subject to change. Not all products are available in all countries. Please consult your local sales representative for details.



Thermo Fisher Scientific,
Sunnyvale, CA USA is
ISO 9001 Certified.

Africa +43 1 333 50 34 0
Australia +61 3 9757 4300
Austria +43 810 282 206
Belgium +32 53 73 42 41
Brazil +55 11 3731 5140
Canada +1 800 530 8447
China 800 810 5118 (free call domestic)
 400 650 5118

Denmark +45 70 23 62 60
Europe-Other +43 1 333 50 34 0
Finland +358 9 3291 0200
France +33 1 60 92 48 00
Germany +49 6103 408 1014
India +91 22 6742 9494
Italy +39 02 950 591

Japan +81 6 6885 1213
Korea +82 2 3420 8600
Latin America +1 561 688 8700
Middle East +43 1 333 50 34 0
Netherlands +31 76 579 55 55
New Zealand +64 9 980 6700
Norway +46 8 556 468 00

Russia/CIS +43 1 333 50 34 0
Singapore +65 6289 1190
Sweden +46 8 556 468 00
Switzerland +41 61 716 77 00
Taiwan +886 2 8751 6655
UK/Ireland +44 1442 233555
USA +1 800 532 4752

Thermo
SCIENTIFIC

A Thermo Fisher Scientific Brand