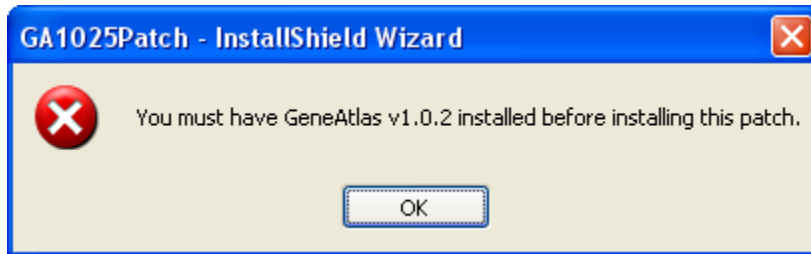


## GeneAtlas™ Instrument Control Software Updates

1. GeneAtlas 1.0.5 is a patch, not a full install. Thus, the patch requires GeneAtlas 1.0.2 or higher already installed on your GeneAtlas system. An error message will appear if GeneAtlas 1.0.2 or higher is not installed. Here is an example of the error message:



2. Verify the version of GeneAtlas Instrument Control Software being used by clicking on the "Utility Actions" menu and selecting "About." Note: The software version is located in the upper left-hand corner of the splash screen. It should be Build 1.0.2 or higher.



3. Is your GeneAtlas System connected to the internet?
  - a. **If yes**, go to step 4.
  - b. **If no**, go to step 5.
4. If your GeneAtlas System is connected to the internet:
  - a. Click on the "Utility Actions" menu.
  - b. Click on the "Updates Available" menu option.
  - c. An internet browser will launch and take you to the NetAffx® Analysis Center's *Latest Software Uploads* page.
  - d. Select the link for the GeneAtlas Instrument Control Software update you would like to install.

- e. Skip to Step 5.

Welcome, Guest! (Log In | Register) 0 Items Site Product Catalog Quick Order  
Enter Keyword / Product # Go

Products | Brands | Support | Partners & Programs | About Affymetrix | Careers | NetAffx 日本語

Products  
Products  
Microarray Solutions  
Quantitative Assays  
PCR  
Molecular Biology Enzymes  
Molecular Biology Kits and Reagents  
Purification  
Biochemicals  
Detergents and Lipids  
Products Listed A-Z

Home > Products & Services > Software > Affymetrix - Software, Latest Software Uploads

Latest Software Uploaded to Affymetrix.com Printer-Friendly Email

For your convenience, Affymetrix has compiled the most current information about our software in one convenient location. The complete listing of available Affymetrix software and tools can be found [here](#). Quick access to all software downloads can be found [here](#).

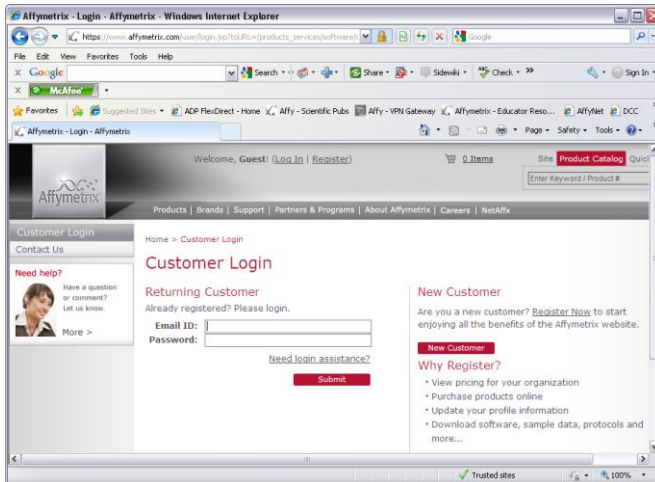
Latest Software Updates  
GeneAtlas™ Instrument Control 1.0.2 Software Update  
\* Posted on 04/09/10  
Download the latest version of [GeneAtlas Instrument Control 1.0.2 Software Update](#) (zip, 14.7 MB). Visit the [GeneAtlas](#) product web page.

5. If your GeneAtlas System is not connected to the internet:
- Open an internet browser and enter the following URL:  
[http://www.affymetrix.com/browse/products.jsp?productId=prod260003&categoryId=cat180002#1\\_3](http://www.affymetrix.com/browse/products.jsp?productId=prod260003&categoryId=cat180002#1_3)
  - Under the *Software Updates* in the *Technical Documentation* tab, select the appropriate software update(s) to install. Clicking the link will bring you to the NetAffx login page.

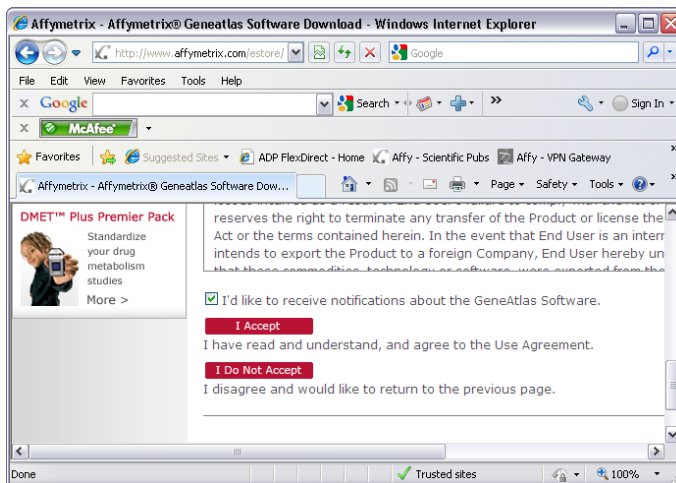
Product Description Technical Documentation Required/Related Products

Software Updates  
[GeneAtlas™ Instrument Control 1.0.2 Software Update](#)  
[GeneAtlas™ Instrument Control Software 1.0.2 Release Notes \(pdf, 28KB\)](#)

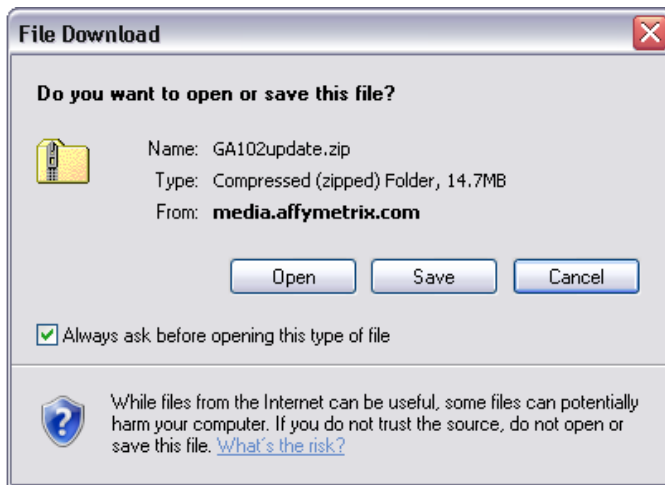
6. Use your [www.affymetrix.com](http://www.affymetrix.com) username and password to access the software installer.



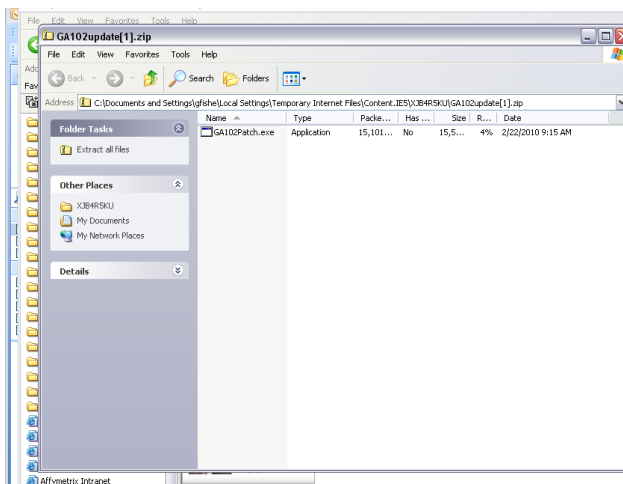
7. Accept the software update agreement.



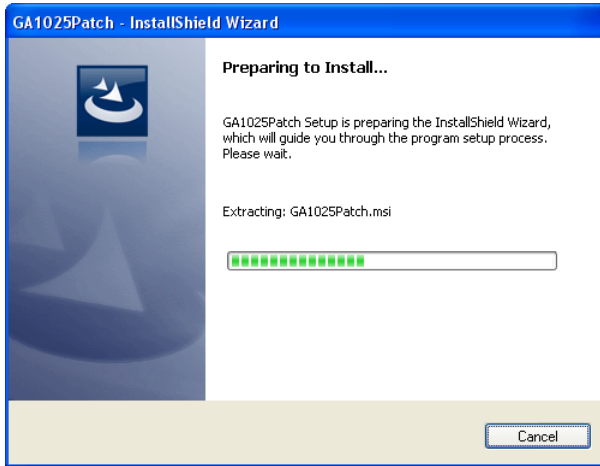
8. If your GeneAtlas System is connected to the internet:
  - a. Select "Open" to access the installer.
  - b. Skip to Step 9.



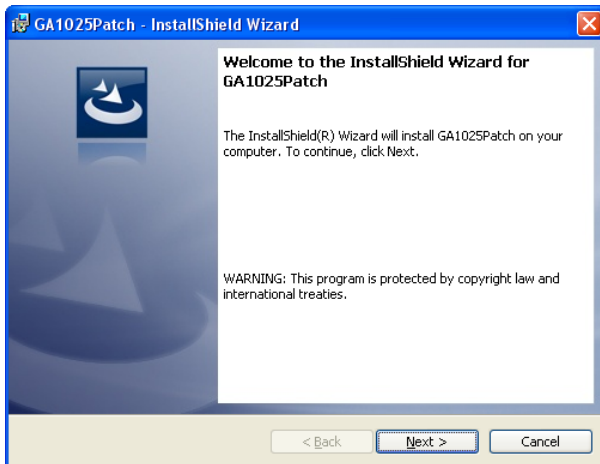
9. If your GeneAtlas System is not connected to the internet:
  - a. Copy the file to removable media (i.e., CD, DVD, or USB drive).
  - b. Insert the disc or drive into the GeneAtlas computer.
  - c. Double-click on the folder to view contents.
10. Double-click on the installer executable (.exe) icon.



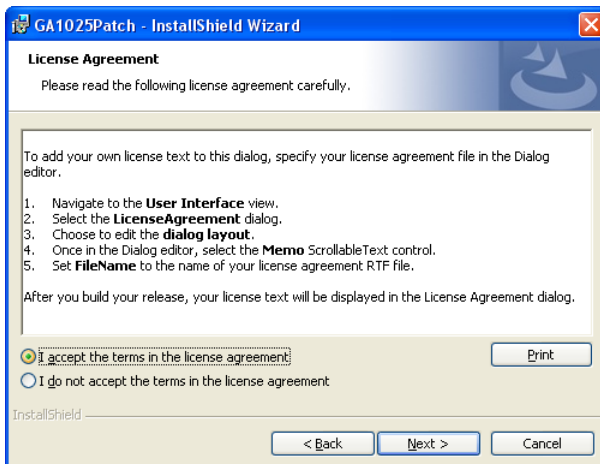
11. The InstallShield Wizard window appears.



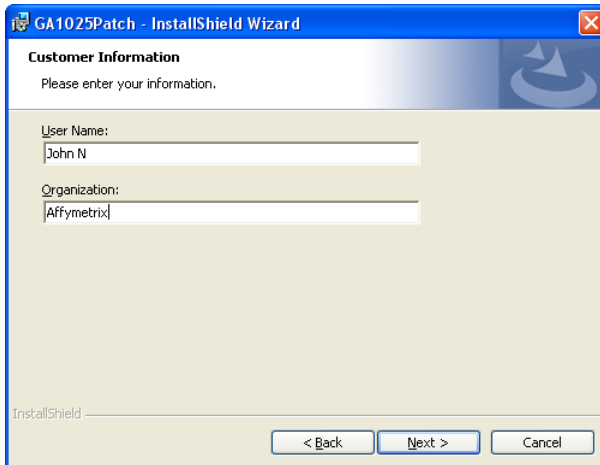
12. The Welcome Window appears. Click "Next."



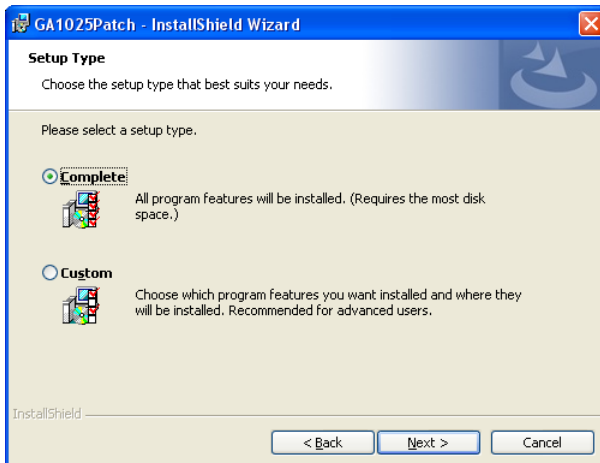
13. The License Agreement Window appears. Select "I accept" and click Next.



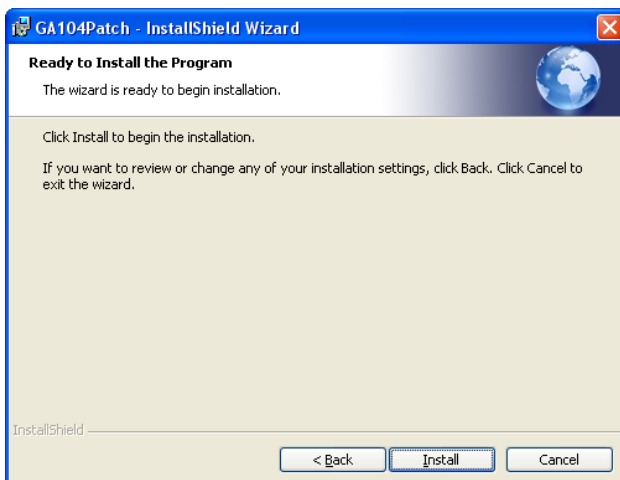
14. The Customer Information Window appears. Enter appropriate information and click Next.



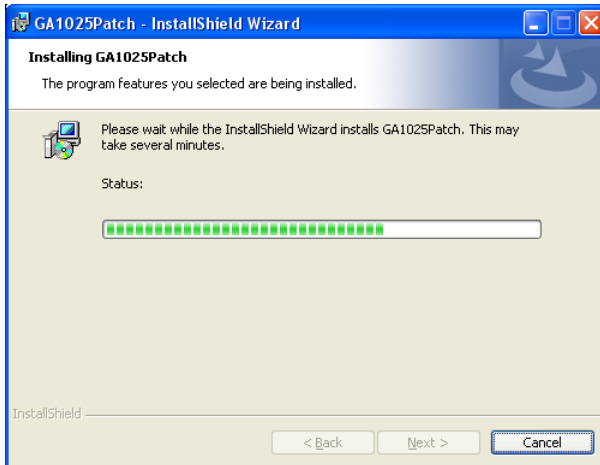
15. The Setup Type Window appears. Select Complete to install all features, and click Next.



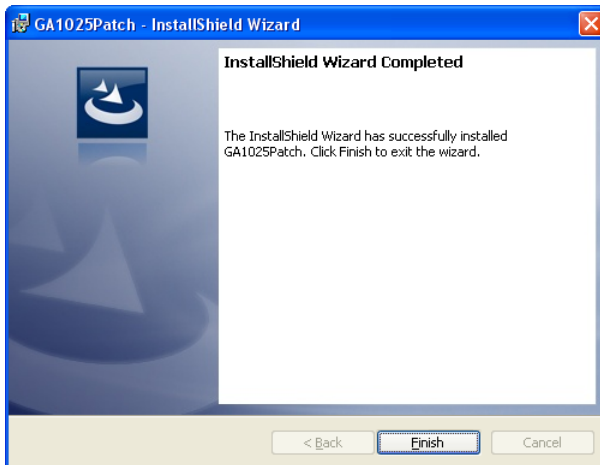
16. Click "Install" to begin the installation.



17. The installation continues.



18. When installation is completed, click "Finish."



### Support

If you need to contact support, please send email inquiries to [support@affymetrix.com](mailto:support@affymetrix.com) or call 1-888 - 362-2447.

For research use only. Not for use in diagnostic procedures.