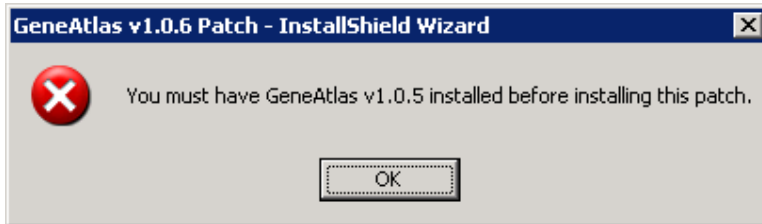


GeneAtlas™ Instrument Control Software Updates

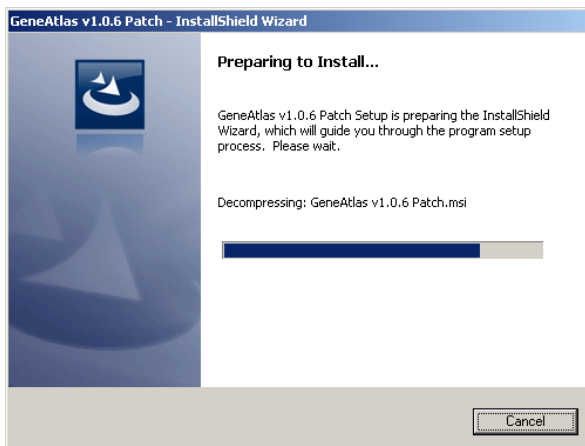
1. GeneAtlas 1.0.6 is a patch, not a full install. Thus, the patch requires GeneAtlas 1.0.5 installed on your GeneAtlas system. An error message will appear if GeneAtlas 1.0.5 is not installed. Here is an example of the error message:



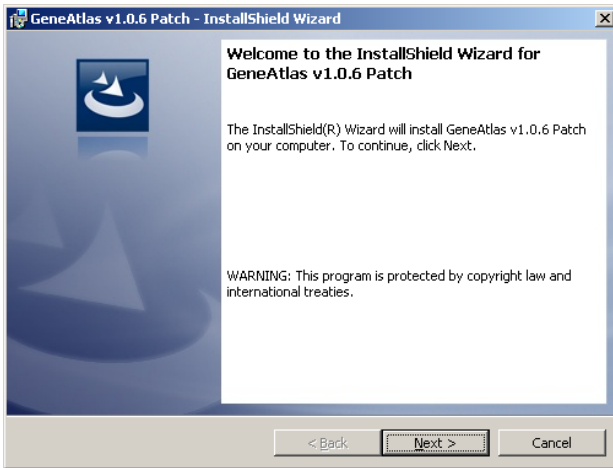
2. Verify the version of GeneAtlas Instrument Control Software being used by clicking on the "Utility Actions" menu and selecting "About." Note: The software version is located in the upper left-hand corner of the splash screen. It should be Build 1.0.5 or higher.



3. Double-click on the installer executable (.exe) icon.
4. The InstallShield Wizard window appears.



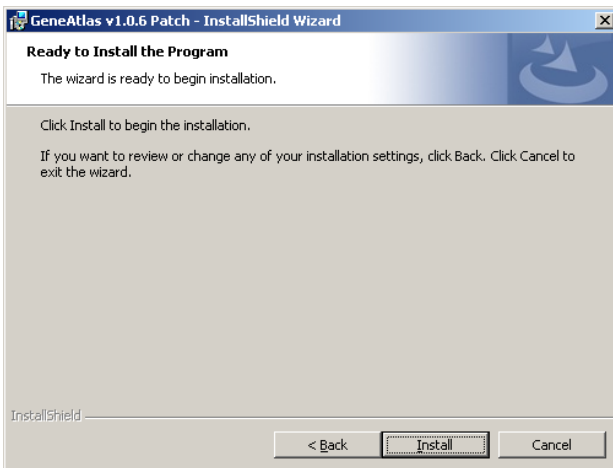
5. The Welcome Window appears. Click "Next."



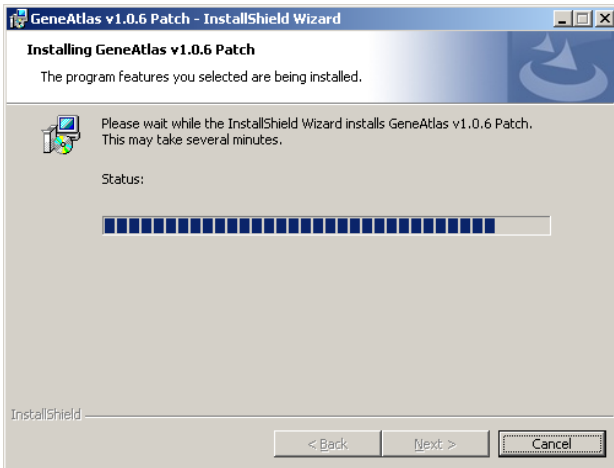
6. The License Agreement Window appears. Select "I accept" and click Next.



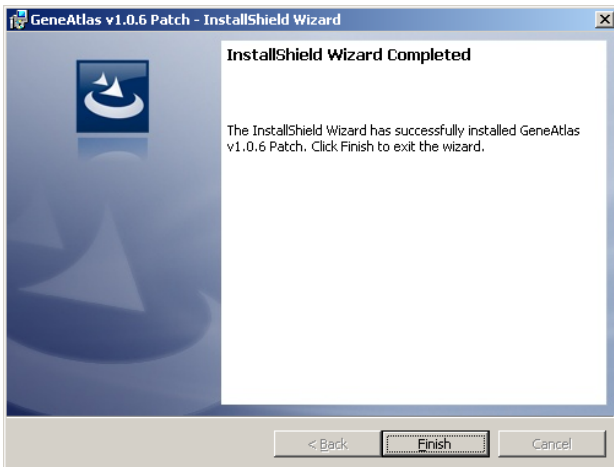
7. Click "Install" to begin the installation.



8. The installation continues.



9. When installation is completed, click "Finish."



Support

If you need to contact support, please send email inquiries to support@affymetrix.com or call 1-888 - 362-2447.

For research use only. Not for use in diagnostic procedures.