

Genotyping Console 4.1.2 Installation Information

This document provides information on the following topics:

- Minimum Requirements
 - Upgrading to GTC 4.1.2 software
 - New Installation of GTC 4.1.2 software
 - Latest library and annotations files for use with GTC 4.1.2
 - Manuals
 - Support
-

MINIMUM REQUIREMENTS

Genotyping Console 4.1.2 supports the following:

- Windows XP SP3 (32-bit)
- Windows XP SP2 (64-bit)
- Windows 7 Professional SP1 (32-bit)
- Windows 7 Professional SP1 (64-bit)
- Windows 2008 Server Standard Edition R2 (64-bit)

When installing GTC 4.1.2 on Windows 2008 Server, an error will display “You must use the Role Management Tool to install or configure Microsoft .NET Framework 3.5 SP1.”

To address this error:

- Cancel the GTC installation
- Go to Start => Administrative Tools => Server Manager
- Click on Features
- Click Add Features
- Expand .NET Framework 3.5.1 Features and check the .NET Framework 3.5.1 checkbox
- Click Next
- Click Install
- After .NET is installed, install GTC 4.1.2

Memory and CPU Requirements

- Quad Core System, 3 GHz
 - For 32-bit stations: Minimum 3GB RAM, recommended 4 GB RAM
 - For 64-bit stations: Minimum 4GB RAM, recommended 16GB RAM
-

UPGRADING TO GTC 4.1.2 SOFTWARE

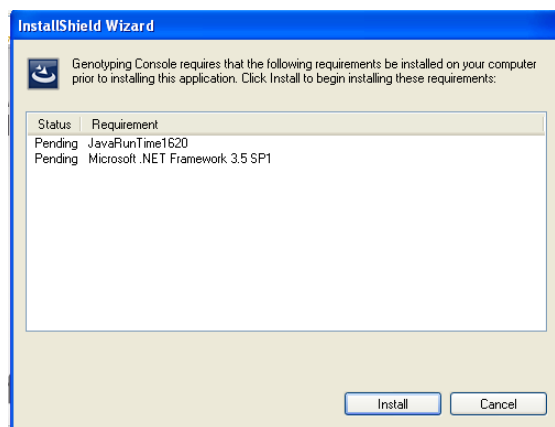
1. Browse to the folder where the GTC 4.1.2 executable file is located. Double-click the GenotypingConsoleSetup32.exe (for 32-bit system) or GenotypingConsoleSetup.exe (for 64-bit system).

The Open File dialog appears.

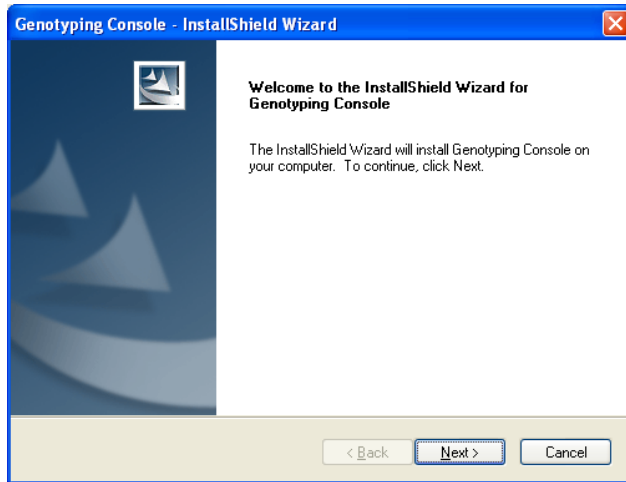
You may need to click 'Run' / 'Allow' to allow the Genotyping Console Setup executable to run, if asked by a dialog box similar to below.



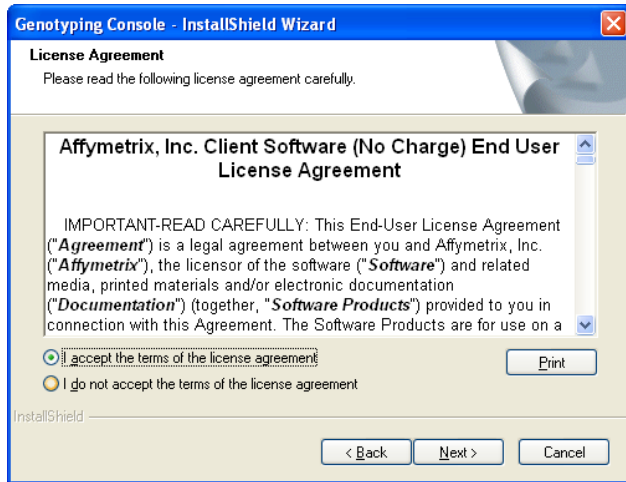
2. Click Run. If a prior version of GTC is already installed, a dialog box appears asking if you want to remove that prior version and install GTC 4.1.2. Click Yes and follow the on screen instructions to upgrade to GTC 4.1.2.
3. You may also be prompted to click an 'Install' button to install a newer version of Microsoft .NET and/or Java if a recent version is not already installed on your system. Click Install.



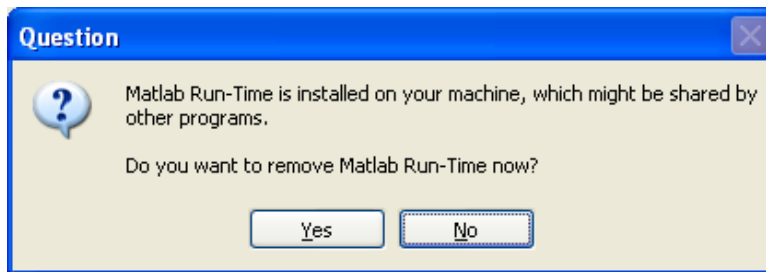
The Install Shield Wizard dialog appears. Click Next.



4. The License Agreement dialog appears. Select "I accept the terms of the license agreement" and click Next.



5. The Matlab Run-Time dialog appears if you have GTC 2.0 or GTC 2.1 installed.

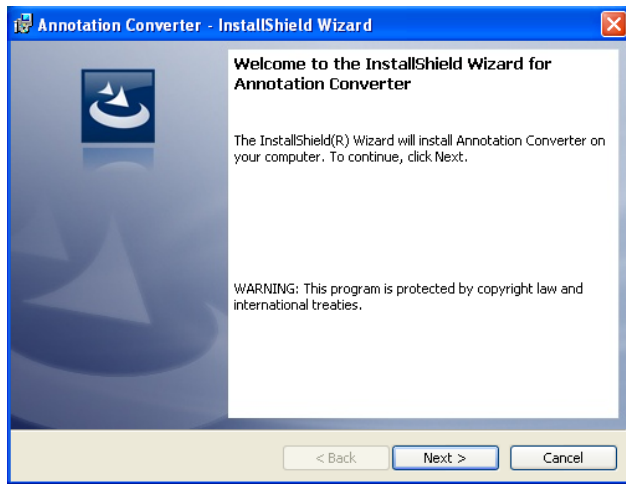


NOTE: Other software applications on your system may depend on Matlab. If you are unsure whether or not to remove Matlab, do not remove.

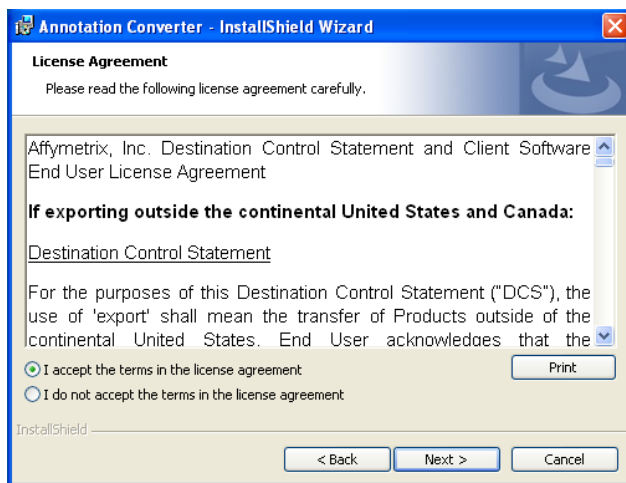
Click Yes or No to confirm your choice to remove or keep the Matlab Run-time.

The Genotyping Console install will begin.

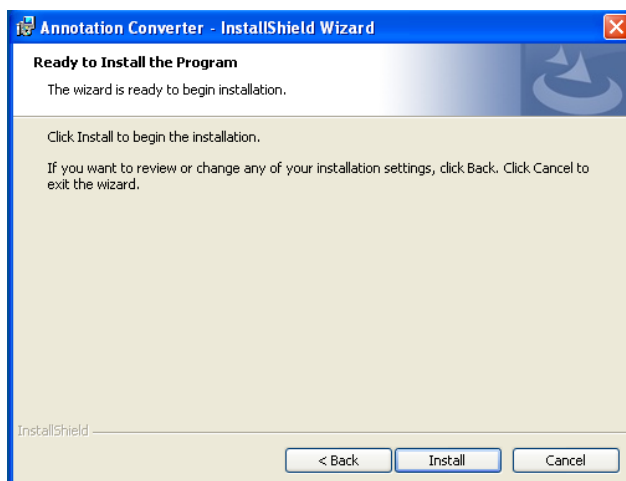
6. Once GTC is installed, the InstallShield Wizard for Annotation Converter dialog appears. Click Next.



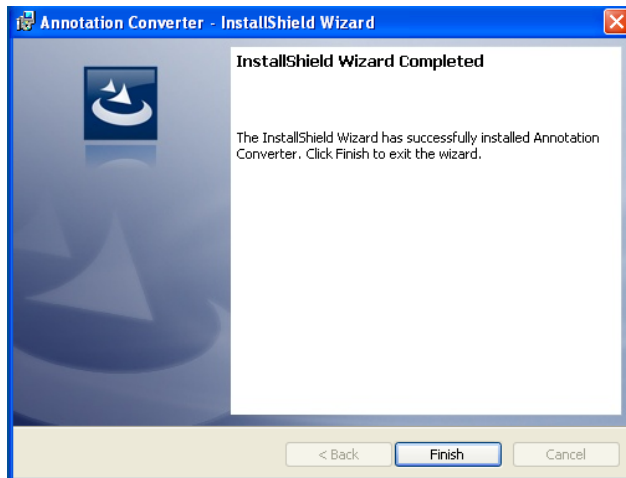
7. The License Agreement dialog appears. Select "I accept the terms of the license agreement" and click Next.



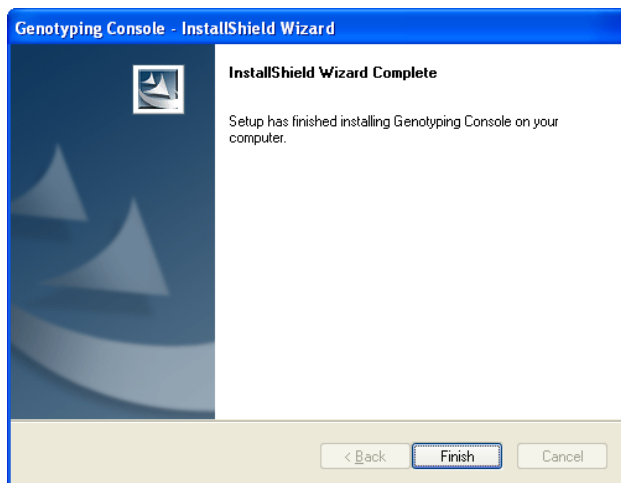
8. The InstallShield Wizard for Annotation Converter dialog appears. Click Install to begin.



9. Click Finish to complete the Annotation Converter installation.



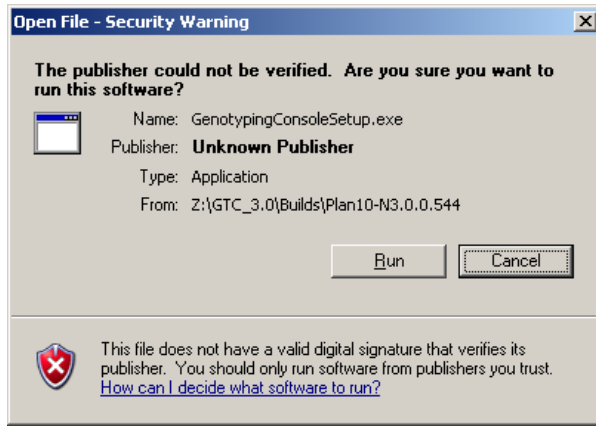
10. Click Finish to complete the installation



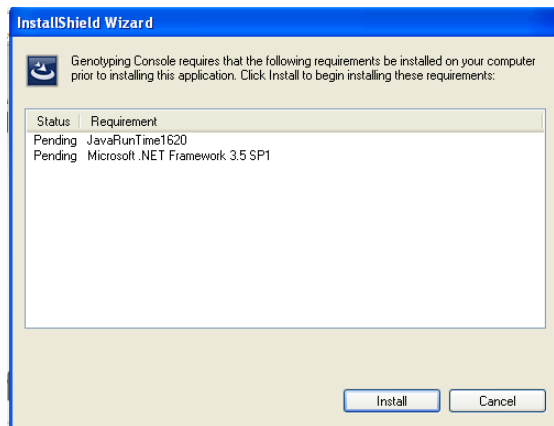
NEW INSTALLATION OF GTC 4.1.2 SOFTWARE

1. Browse to the folder where the GTC 4.1.2 executable file is located. Double-click the GenotypingConsoleSetup32.exe (for 32-bit system) or GenotypingConsoleSetup.exe (for 64-bit system).

An Open File dialog similar to below may appear. If it does appear, click 'Run' or 'Allow' to allow the Genotyping Console Setup executable to run.



2. If Install Shield Wizard for .NET dialog appears click Install.
NOTE: If a recent version of .NET or Java is already installed, you will not see this dialog.

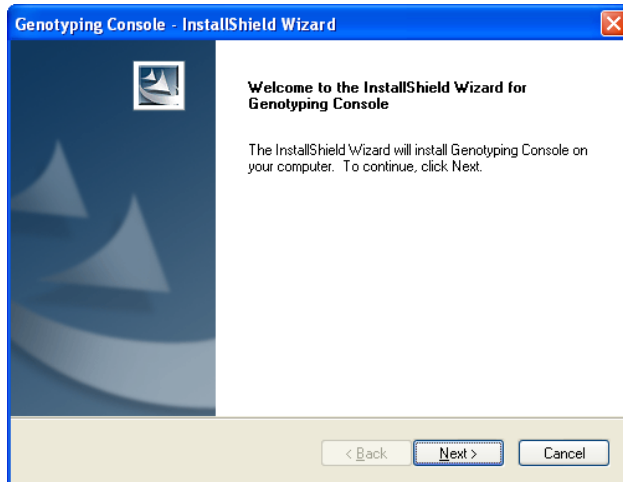


3. If your system does not have a recent version of Java, you may see a screen similar to below. You must click Accept to continue installation, and then click Finish when the Java install prompts you.

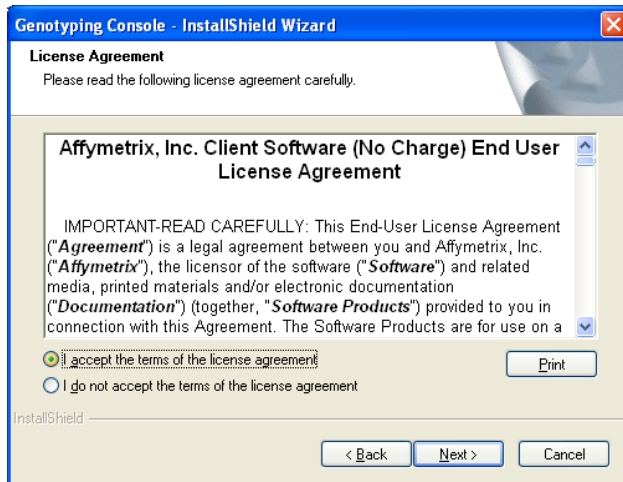


4. Click Install when prompted by the Genotyping Console installer. The Install Shield Wizard for Genotyping Console dialog appears.

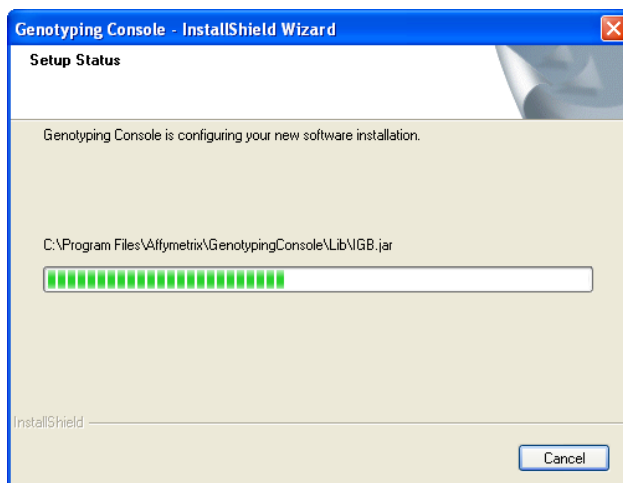
Click Next.



5. The License Agreement dialog appears. Select "I accept the terms of the license agreement" and click Next.

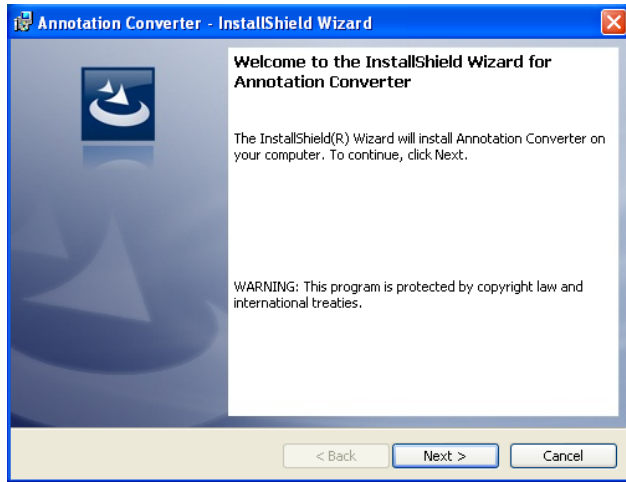


The install begins.

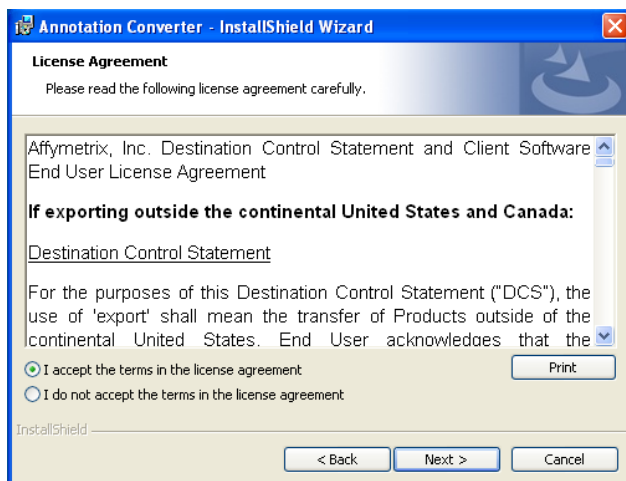


6. Once GTC is installed, the InstallShield Wizard for Annotation Converter dialog

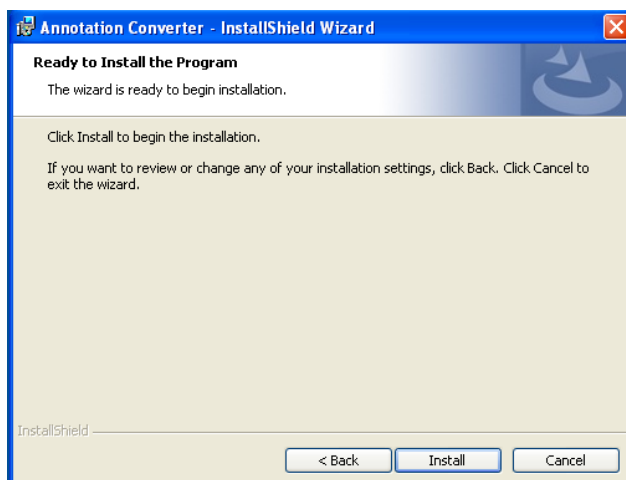
appears. Click Next.



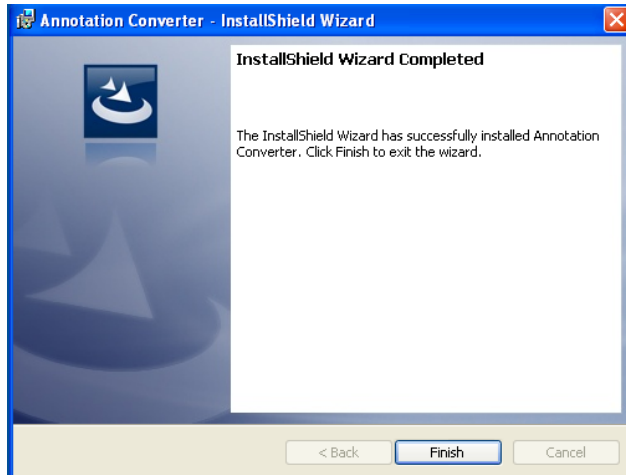
7. The License Agreement dialog appears. Select "I accept the terms of the license agreement" and click Next.



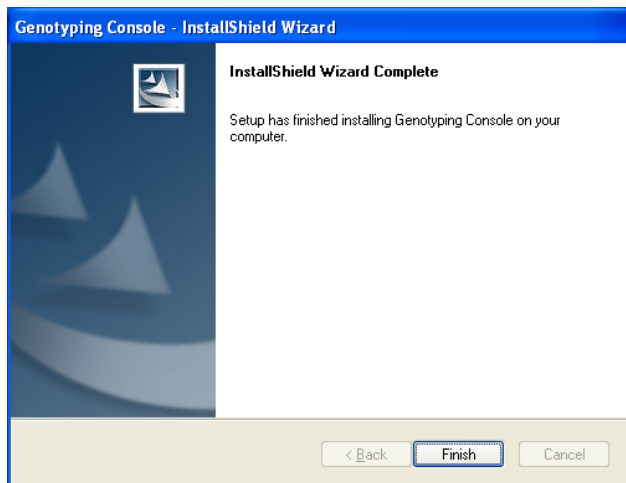
8. The InstallShield Wizard for Annotation Converter dialog appears. Click Install to begin.



- Click Finish to complete the Annotation Converter installation.



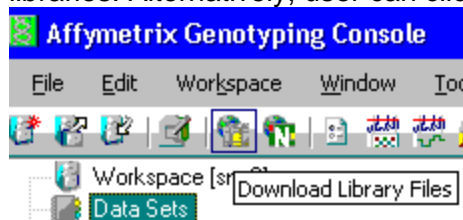
- Click Finish to complete the Genotyping Console installation.



DOWNLOAD THE LATEST LIBRARY AND ANNOTATIONS FILES FOR USE WITH GTC 4.1.2

New and updated library files and annotations files are needed to support new functions in GTC 4.1.2.

- Within the GTC program, click the Library Download icon to download the latest libraries. Alternatively, user can click File and select Download Library Files.



2. Within the GTC program, click the Annotations Download icon to download the latest Annotations.

MANUALS

Documentation is located in the Manuals folder.

The .pdf file(s) are:

1. GTC_4_1_User Manual.pdf
2. GTC_Browser_1_2_User Manual.pdf

In order to view the .pdf file(s), Adobe Acrobat Reader is required. This can be downloaded from <http://www.adobe.com>

SUPPORT

If you need to contact support, please send email inquiries to: support@affymetrix.com or call 1-888-DNA-CHIP (1-888-362-2447)