

Z'-LYTE® Assay Setup Guide on the PerkinElmer EnVision® Multilabel Plate Reader

NOTE: The PerkinElmer EnVision® Multilabel Plate Reader was tested for compatibility with Invitrogen's Z'-LYTE® Assay. The following document is intended to demonstrate setup of this instrument. For more detailed information and technical support of Invitrogen assays please call 1-800-955-6288, select option "3", then extension 40266. For more detailed information and technical support of PerkinElmer instruments or software, please call 1-800-762-4000 or by e-mail at productinfo@perkinelmer.com.

A. Recommended Optics

PerkinElmer part number	wavelength (nm)	diameter (mm)
Excitation Filter (2100-5370)	400/25 (or similar)	15
Emission Filter 1 (2100-5130)	460/25 (or similar)	15
Emission Filter 2 (2100-5120)	535/25 (or similar)	15
Dichroic Mirror *contact PerkinElmer	General BS50 or BLA D425/D490 (single or dual)	

NOTE: Before beginning, you will need to install the correct filters in an appropriate slot. The slot number is not critical but the filters do need to be next to each other for the dual read. If they are not, the machine will give you an error message to switch them.

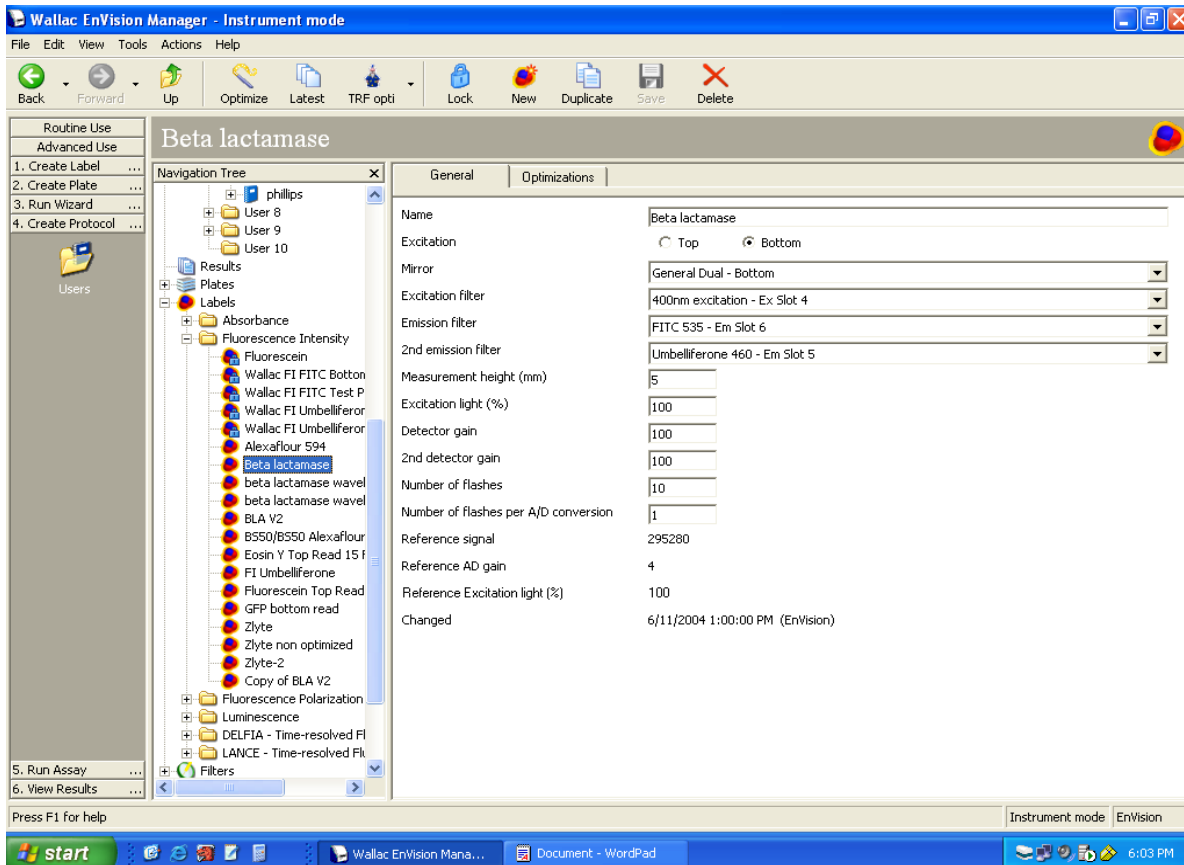
B. Instrument Setup

1. Make certain plate reader is turned on, and open up Wallac EnVision® Manager software on computer.

Setup Guide on the PerkinElmer EnVision[®] Multilabel Plate Reader

2. Setup the following label for Z'-LYTE[®].

NOTE: This assay is to be read from the top. Be sure to select Top for Excitation.



Have a question? Contact our Technical Support Team

NA: 800-955-6288 or INTL: 760-603-7200 Select option 3, ext. 40266 Email: drugdiscoverytech@invitrogen.com