

## BCECF

**Table 1.** Contents and storage information.

Material	Amount	Concentration	Storage	Stability
BCECF free acid (B1151)	1 mg	NA	<ul style="list-style-type: none"> <li>• Room temperature</li> <li>• Protect from light</li> </ul>	When stored as directed, products should be stable for at least 6 months.
BCECF AM (B1150)	1 mg *		<ul style="list-style-type: none"> <li>• ≤-20°C</li> <li>• Desiccate</li> <li>• Protect from light</li> </ul>	
BCECF AM, prealiquoted (B1170)	20 vials, 50 µg each			
BCECF AM solution (B3051)	1 mL	1 mg/mL (~1.6 mM) solution in anhydrous DMSO	<ul style="list-style-type: none"> <li>• ≤-20°C</li> <li>• Protect from light</li> </ul>	
BCECF dextran (D1878, D1880)	10 mg	NA		

\* As the dissolution process is slow, 1 mg solid units can be dissolved in DMSO and divided into small aliquots prior to storage for ease of use.

**Approximate fluorescence excitation/emission maxima:** See Figure 1

## Introduction

BCECF (2',7'-bis-(2-carboxyethyl)-5-(and-6)-carboxyfluorescein), introduced by Roger Tsien and co-workers in 1982,<sup>1</sup> is the most widely used fluorescent indicator for intracellular pH. Several characteristics contribute to this widespread utility:

- The pK<sub>a</sub> of 7.0 is ideally matched to the normal range of cytoplasmic pH (~6.8–7.4).
- The fluorescence excitation profile is pH-dependent (Figure 1), allowing the implementation of ratiometric measurement techniques (see *Intracellular pH Calibration*).
- The absorption maximum of the base form of BCECF is very close to the 488-nm argon-ion laser line, making it ideally suited for flow cytometry<sup>2</sup> and confocal microscopy<sup>3</sup> applications.
- BCECF has 4–5 negative charges at pH 7–8, aiding intracellular retention.
- The acetoxymethyl (AM) ester derivative is membrane-permeant, allowing noninvasive bulk loading of cell suspensions.
- BCECF AM is nonfluorescent. Its conversion to fluorescent BCECF via the action of intracellular esterases can be used as an indicator of cell viability.

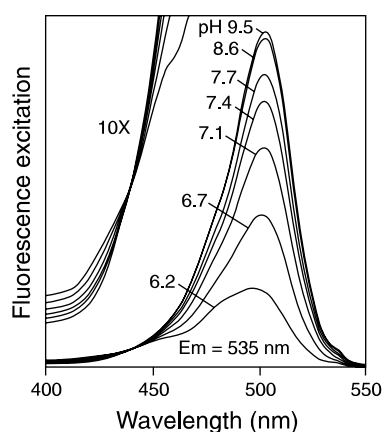
Some characteristics of BCECF are less than optimal. Firstly, the fluorescence excitation isosbestic point is quite far from the excitation maximum (Figure 1), giving poor signal-to-noise characteristics in ratio imaging microscopy.<sup>4,5</sup> Secondly, pH-dependent changes in the fluorescence emission spectral profile are very small, so that although dual emission ratio measurements are possible,<sup>2</sup> they are not often performed.

#### **BCECF AM Esters**

Modification of carboxylic acids with AM ester groups results in an uncharged molecule that can permeate cell membranes. Once inside the cell, the lipophilic blocking groups are cleaved by nonspecific esterases, resulting in a charged form that leaks out of cells far more slowly than its parent compound. Our bibliography on BCECF AM, listing hundreds of published applications, is continually updated and is available at our Web site ([www.probes.com](http://www.probes.com)). Although applications in mammalian cells<sup>6-8</sup> are predominant, BCECF has also been employed for pH measurements in perfused tissues,<sup>9-11</sup> intercellular spaces,<sup>12,13</sup> plant cells,<sup>14,15</sup> bacteria<sup>16,17</sup> and yeast.<sup>18,19</sup> BCECF AM has also been employed in assays for various functional properties of cells including viability and cytotoxicity,<sup>20-24</sup> apoptosis,<sup>25</sup> adhesion,<sup>26-31</sup> multidrug resistance<sup>32-34</sup> and chemotaxis.<sup>27</sup>

#### **BCECF Dextrans**

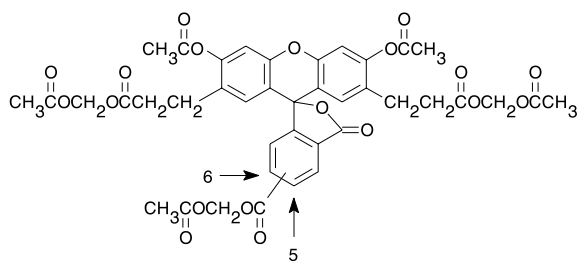
Invitrogen also offers microinjectable BCECF dextrans (D1878, D1880), which exhibit excellent intracellular retention, reduced compartmentalization and a much lower degree of phototoxicity compared to BCECF AM.<sup>35</sup> Our 10,000 MW BCECF dextran (D1878) was used with patch-pipette techniques to measure nuclear and cytosolic pH in frog neurons.<sup>36</sup>



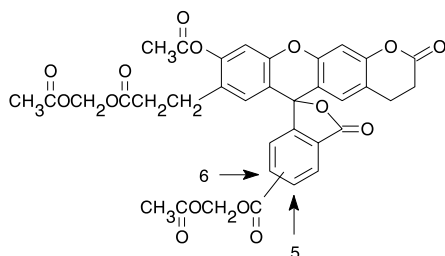
**Figure 1.** The pH-dependent fluorescence excitation spectra of BCECF. The 10X enlargements of the region below 470 nm clearly illustrate the excitation isosbestic point at ~439 nm.

#### **Molecular Structures**

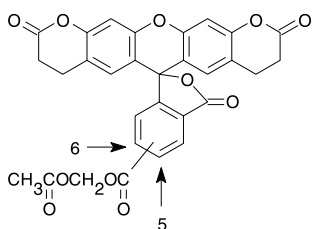
Several different molecular species can be obtained in synthetic preparations of BCECF AM (Figure 2). BCECF AM prepared by Invitrogen is predominately a mixture of Forms II and III (Figure 2). Our quality control specifications require that the summation of the different BCECF AM structural forms constitutes >90% of the total product (determined by HPLC). Because the molecular weights of the species are different, the effective molecular weight for each individual production lot is subject to minor variations. Lot-specific molecular weight values, based on HPLC and NMR composition analysis, are reported on the product's label. All three forms of BCECF AM shown in Figure 2 appear to be converted to the same product—BCECF acid (B1151)—by intracellular esterase hydrolysis.



I (Molecular Weight = 820.7)



II (Molecular Weight = 688.6)



III (Molecular Weight = 556.5)

**Figure 2.** Molecular structures of BCECF, AM.

## Before You Begin

### Materials Required but Not Provided

- Additional anhydrous DMSO
- Hank's Balanced Salt Solution (HBSS)
- An aqueous buffer for BCECF stock solution of free acid or dextran formulations

### Preparing BCECF AM Stock Solutions

Stock solutions of **BCECF AM** should be reconstituted only as required and should be prepared by dissolving the solid material in high-quality *anhydrous* DMSO at 1–10 mM. DMSO stock solutions should be stored desiccated at  $\leq -20^{\circ}\text{C}$ , and preferably used within a short period of time for one series of experiments. Stock solutions of BCECF AM should be stable for at least 6 months if prepared and stored as directed above. Solutions exhibiting strong fluorescence and coloration (indicated by absorbance at  $>400\text{ nm}$ ) probably contain a significant amount of hydrolyzed material and should be discarded. Dilute working solutions in aqueous media (see *Loading in Mammalian Cells*) should be used immediately and should not be stored. BCECF AM is normally colorless and nonfluorescent (although faint color and fluorescence are tolerable).

**Note:** DMSO stock solutions must be kept anhydrous, since the solvent will readily take up moisture, leading to decomposition of the dye. It is advisable to keep the AM ester in as concentrated a stock as possible so that minimal amounts (ideally  $\leq 0.1\%$ ) of DMSO are present in the loading solution.

### Preparing BCECF Free Acid and Dextran Solutions

Stock solutions of **BCECF free acid** and **dextran** may be prepared in aqueous buffers with pH >6. Most aqueous buffers are suitable for preparation of stock solutions of these conjugates.

## Guidelines for Use

---

### Loading BCECF AM in Mammalian Cells

Most mammalian cells can be loaded without permeabilization by incubation with dilute aqueous dispersions of cell-permeant BCECF AM. Once within the cell, nonspecific esterases hydrolyze the nonfluorescent AM ester precursor, yielding the fluorescent, pH-sensitive indicator. The low leakage rate of the polyanionic indicator and the small intracellular volume results in the final intracellular concentration being much higher than the external incubation concentration. In general, BCECF loaded via the AM ester method appears less susceptible to intracellular compartmentalization than calcium indicators such as fura-2.<sup>38</sup> A variety of physical evidence has been assembled indicating that BCECF remains free and dissociated within the cytoplasm.<sup>4,39</sup> The following protocol is recommended as an approximate guide to the loading conditions for BCECF AM:

1. Prepare viable cells in suspension ( $\sim 10^6$  cells/mL).

**Note:** Conditions for loading adherent cells are similar to those given for cells in suspension. Adherent cells in culture dishes may be immersed in AM ester loading solution in physiological saline (step 2). To load cells grown on coverslips, simply transfer the coverslips to a dish containing BCECF AM loading medium after gently pouring off the maintenance medium. Adherent cultures do not need to be lifted for loading.

2. Dilute an aliquot of 1 mM AM ester stock solution (see *Materials*) 100- to 500-fold into a physiological saline buffer such as Hanks' buffered salt solution (HBSS). In general, the minimum concentration of AM ester necessary to obtain an adequate signal should be used (incubation concentrations as low as  $0.1 \mu\text{M}$  may be sufficient) to minimize accumulation of the by-products of AM ester hydrolysis (formaldehyde and acetic acid) and to help facilitate a more complete hydrolysis. The loading medium should be free of amino acids or buffers containing primary or secondary amines, since aliphatic amines may cleave the AM esters and prevent loading, and to keep extracellular hydrolysis of the AM ester to a minimum. The presence of serum, which may contain endogenous esterase activity, should also be avoided until after loading is complete.
3. Add one volume of aqueous AM ester dispersion to one volume of cell suspension. Incubate for 15–60 minutes at  $4^\circ\text{C}$  to  $37^\circ\text{C}$ .

**Note:** Some investigators have reported greater degrees of compartmentalization at physiological temperatures than at room temperature.

4. Wash the cells twice with fresh culture medium.

## Application to Tissue Samples

Generally similar BCECF AM loading protocols to that described in *Loading BCECF AM in Mammalian Cells* have been successfully applied to a variety of tissue samples including rat arteries;<sup>40,41</sup> rat salivary glands and pancreas;<sup>9</sup> rabbit kidney collecting tubules<sup>8</sup> and rabbit gastric glands.<sup>11</sup> In most of these experiments, the tissue sample is mounted in a perfusion chamber<sup>38</sup> and BCECF AM (~1–5  $\mu\text{M}$ ) is added to the perfusate for 5–60 minutes, followed by extensive washing with unmodified perfusate. For pH measurements in intercellular spaces, loading can be performed by direct injection of a brief pulse of 0.2–0.5 mM BCECF acid (B1151).<sup>12,13</sup> BCECF acid (50–100  $\mu\text{M}$ ) can be loaded into isolated cells or tissue slices by diffusion from a patch pipette for correlated fluorescence imaging and electrophysiological recording.<sup>41,42</sup>

## Loading in Other Cell Types

**Bacteria:** Both gram-positive and gram-negative bacteria have been loaded with BCECF by subjecting a dense cell suspension to a brief acid shock (50 mM HCl for 5 minutes) in the presence of 0.5 mM BCECF acid (B1151).<sup>16,17</sup> The indicator appears to be well retained in *Lactococcus lactis* incubated on ice; however energization with lactose stimulates rapid efflux.<sup>17</sup>

**Yeast and Fungi:** Attempts to load the yeast *Saccharomyces cerevisiae* by incubation with 10  $\mu\text{M}$  BCECF AM do not yield particularly good uptake of the indicator, apparently because of inefficient AM ester hydrolysis by the yeast intracellular es-terases.<sup>18,19</sup> Carboxy SNARF-1 AM acetate reportedly shows much better uptake in this case.<sup>19</sup> Loading of the fungus *Neurospora crassa* with BCECF AM reportedly results in accumulation of the indicator in vacuoles instead of an even cytoplasmic distribution.<sup>43</sup>

**Plants:** Loading of suspended protoplasts ( $2 \times 10^6/\text{mL}$ ) from the crabgrass *Digitaria sanguinalis* by incubation with low concentrations of BCECF AM (10 nM) produces an even cytosolic distribution of the indicator.<sup>14</sup> Higher incubation concentrations (3  $\mu\text{M}$ ) used to load maize root hair cells result in vacuolar accumulation.<sup>15</sup>

## Intracellular pH Calibration

The pH-dependent spectral shifts exhibited by BCECF (Figure 1) allow calibration of the pH response in terms of the **ratio** of fluorescence intensities measured at two different excitation wavelengths (equation 1).<sup>44</sup> A number of fluorescence measurement artifacts are eliminated in formulation of the ratio, including photobleaching, leakage and nonuniform loading of the indicator, cell thickness, and instrument stability.<sup>4,5</sup>

$$[\text{H}^+] = K_a \frac{(R - R_A)}{(R_B - R)} \times \frac{F_{A(\lambda_2)}}{F_{B(\lambda_2)}} \quad (1)$$

where R is the ratio  $F_{(\lambda_1)}/F_{(\lambda_2)}$  of fluorescence intensities (F) measured at two wavelengths  $\lambda_1$  and  $\lambda_2$  and the subscripts A and B represent the limiting values at the acidic and basic endpoints of the titration, respectively. Note that background fluorescence corrections should be subtracted **before** calculation of R. A typical BCECF calibration would use a dual-excitation ratio with  $\lambda_1 = 490 \text{ nm}$  and  $\lambda_2 = 440 \text{ nm}$  and fixed emission at 535 nm. Dual-excitation filter sets for fluorescence microscopy applications are available from Omega Optical Inc. ([www.omegafilters.com](http://www.omegafilters.com), set XF16) and Chroma Technology Corp. ([www.chroma.com](http://www.chroma.com), set 71001).

For confocal microscopy, helium–cadmium laser output at 442 nm has been used for excitation in combination with the 488 nm argon-ion laser line.<sup>3,45</sup> Note that selection of  $\lambda_2$  at the pH-independent isosbestic point (~439 nm for BCECF) eliminates the normalization factor  $F_{A(\lambda_2)}/F_{B(\lambda_2)}$  from equation (1). Although the emission spectral profile of BCECF is much less pH-dependent than that of the excitation spectrum, 525/640 nm fluorescence emission ratios (excited at 488 nm) are occasionally used for flow cytometric pH measurements.<sup>2,25</sup>

The logarithmic form of the equation (1) is:

$$\text{pH} = \text{pK}_a - \log \frac{(R - R_A)}{(R_B - R)} \times \frac{F_{A(\lambda_2)}}{F_{B(\lambda_2)}} \quad (2)$$

In this form, the data should yield a linear plot with a slope of 1 and an intercept equal to the  $\text{pK}_a$ . Calibrating the fluorescence response of BCECF to pH-controlled buffers *in vitro* yields a  $\text{pK}_a$  of 7.0.<sup>1,44</sup> However, since the response may be somewhat different when the dye is loaded in cells,<sup>38</sup> *in situ* calibration is generally advisable for each experimental system. *In situ* calibration can be performed by using the ionophore nigericin (N1495) at a concentration of 10–50  $\mu\text{M}$  in the presence of 100–150 mM potassium to equilibrate the intracellular pH with the controlled extracellular medium.<sup>37,46</sup> A number of alternative *in situ* calibration methods for BCECF have been described in the literature.<sup>47,48</sup>

### Cell Function Assays

Cytotoxicity assays using BCECF AM are based on the generation of fluorescence by intracellular esterase action and its retention correlated with membrane integrity as indicators of cell viability. Cells are loaded with BCECF AM following protocols similar to that described in *Loading in Mammalian Cells*, and cytotoxicity is expressed in terms of either the fluorescence remaining associated with the cells or the fluorescence released into the supernatant, relative to the initial cellular fluorescence prior to the cytotoxic treatment.<sup>20,22,24</sup> Cytotoxicity assays using BCECF are suitable for implementation on high-throughput fluorescence microplate readers and provide rapid and convenient alternatives to <sup>51</sup>Cr release assays.<sup>22</sup> Cell adhesion assays using BCECF AM employ similar principles. In a typical example,<sup>30</sup> CHO cells were seeded in microplate wells, to which were then added murine R1.1 cells loaded by incubation with 2  $\mu\text{M}$  BCECF AM at 37°C for 30 minutes. After incubation for 20 minutes, the plates were washed and the number of R1.1 cells bound was determined by proportionality to the remaining BCECF fluorescence measured using a fluorescence microplate reader.

## References

---

1. J Cell Biol 95, 189 (1982);
2. Methods Cell Biol 41, 135 (1994);
3. Am J Physiol 259, C365 (1990);
4. Methods Cell Biol 30, 157 (1989);
5. Methods Cell Biol 56, 237 (1998);
6. J Biol Chem 271, 861 (1996);
7. J Cell Biol 132, 1037 (1996);
8. Endocrinology 137, 677 (1996);
9. Pflügers Arch 426, 75 (1994);
10. Am J Physiol 256, F957 (1989);
11. Proc Natl Acad Sci USA 81, 7436 (1984);
12. Am J Physiol 266, C73 (1994);
13. Cancer Res 54, 5670 (1994);
14. Cytometry 23, 241 (1996);
15. J Plant Physiol 145, 57 (1995);
16. J Biol Chem 269, 29509 (1994);
17. Biochim Biophys Acta 1115, 75 (1991);
18. FEMS Microbiol Lett 130, 245 (1995);
19. Biochim Biophys Acta 1098, 79 (1991);
20. J Immunol Methods 172, 255 (1994);
21. Cytometry 11, 244 (1990);
22. J Immunol Methods 122, 15 (1989);
23. Anal Biochem 177, 364 (1989);
24. J Immunol Methods 108, 255 (1988);
25. J Biol Chem 270, 6235 (1995);
26. Cytometry 23, 39 (1996);
27. Mol Biol of the Cell 6, 661 (1995);
28. J Immunol Methods 172, 115 (1994);
29. J Cell Biol 125, 1395 (1994);
30. J Biol Chem 269, 1033 (1994);
31. J Biol Chem 268, 8835 (1993);
32. Biophys J 69, 883 (1995);
33. Cytometry 17, 343 (1994);
34. J Biol Chem 268, 21493 (1993);
35. J Cell Physiol 141, 410 (1989);
36. J Neurosci 14, 5741 (1994);
37. Methods Enzymol 192, 38 (1990);
38. J Cell Biol 112, 719 (1991);
39. J Physiol 482, 409 (1995);
40. J Physiol 402, 391 (1988);
41. J Physiol 496, 695 (1996);
42. Methods Enzymol 296, 617 (1998);
43. J Exp Biol 196, 419 (1994);
44. Anal Biochem 156, 202 (1986);
45. Pflügers Arch 422, 523 (1993);
46. Biochemistry 18, 2210 (1979);
47. J Fluorescence 2, 191 (1992);
48. J Cell Physiol 151, 596 (1992).

## Product List Current prices may be obtained from our website or from our Customer Service Department.

Cat #	Product Name	Unit Size
B1151	2',7'-bis-(2-carboxyethyl)-5-(and-6)-carboxyfluorescein (BCECF acid) *mixed isomers*.....	1 mg
B1150	2',7'-bis-(2-carboxyethyl)-5-(and-6)-carboxyfluorescein, acetoxymethyl ester (BCECF, AM).....	1 mg
B1170	2',7'-bis-(2-carboxyethyl)-5-(and-6)-carboxyfluorescein, acetoxymethyl ester (BCECF, AM) *special packaging*.....	20 x 50 µg
B3051	2',7'-bis-(2-carboxyethyl)-5-(and-6)-carboxyfluorescein, acetoxymethyl ester (BCECF, AM) *1 mg/mL solution in dry DMSO*.....	1 mL
D1878	dextran, BCECF, 10,000 MW, anionic.....	10 mg
D1880	dextran, BCECF, 70,000 MW, anionic.....	10 mg
N1495	nigericin, free acid.....	10 mg

## Contact Information

### Molecular Probes, Inc.

29851 Willow Creek Road  
Eugene, OR 97402  
Phone: (541) 465-8300  
Fax: (541) 335-0504

### Customer Service:

6:00 am to 4:30 pm (Pacific Time)  
Phone: (541) 335-0338  
Fax: (541) 335-0305  
probesorder@invitrogen.com

### Toll-Free Ordering for USA:

Order Phone: (800) 438-2209  
Order Fax: (800) 438-0228

### Technical Service:

8:00 am to 4:00 pm (Pacific Time)  
Phone: (541) 335-0353  
Toll-Free (800) 438-2209  
Fax: (541) 335-0238  
probestech@invitrogen.com

### Invitrogen European Headquarters

Invitrogen, Ltd.  
3 Fountain Drive  
Inchinnan Business Park  
Paisley PA4 9RF, UK  
Phone: +44 (0) 141 814 6100  
Fax: +44 (0) 141 814 6260  
Email: euroinfo@invitrogen.com  
Technical Services: eurotech@invitrogen.com

Further information on Molecular Probes products, including product bibliographies, is available from your local distributor or directly from Molecular Probes. Customers in Europe, Africa and the Middle East should contact our office in Paisley, United Kingdom. All others should contact our Technical Service Department in Eugene, Oregon.

Molecular Probes products are high-quality reagents and materials intended for research purposes only. These products must be used by, or directly under the supervision of, a technically qualified individual experienced in handling potentially hazardous chemicals. Please read the Material Safety Data Sheet provided for each product; other regulatory considerations may apply.

### Limited Use Label License No. 223: Labeling and Detection Technology

The purchase of this product conveys to the buyer the non-transferable right to use the purchased amount of the product and components of the product in research conducted by the buyer (whether the buyer is an academic or for-profit entity). The buyer cannot sell or otherwise transfer (a) this product (b) its components or (c) materials made using this product or its components to a third party or otherwise use this product or its components or materials made using this product or its components for Commercial Purposes. The buyer may transfer information or materials made through the use of this product to a scientific collaborator, provided that such transfer is not for any Commercial Purpose, and that such collaborator agrees in writing (a) to not transfer such materials to any third party, and (b) to use such transferred materials and/or information solely for research and not for Commercial Purposes. Commercial Purposes means any activity by a party for consideration and may include, but is not limited to: (1) use of the product or its components in manufacturing; (2) use of the product or its components to provide a service, information, or data; (3) use of the product or its components for therapeutic, diagnostic or prophylactic purposes; or (4) resale of the product or its components, whether or not such product or its components are resold for use in research. Invitrogen Corporation will not assert a claim against the buyer of infringement of the above patents based upon the manufacture, use or sale of a therapeutic, clinical diagnostic, vaccine or prophylactic product developed in research by the buyer in which this product or its components was employed, provided that neither this product nor any of its components was used in the manufacture of such product. If the purchaser is not willing to accept the limitations of this limited use statement, Invitrogen is willing to accept return of the product with a full refund. For information on purchasing a license to this product for purposes other than research, contact Molecular Probes, Inc., Business Development, 29851 Willow Creek Road, Eugene, OR 97402, Tel: (541) 465-8300. Fax: (541) 335-0354.

Several Molecular Probes products and product applications are covered by U.S. and foreign patents and patents pending. All names containing the designation ® are registered with the U.S. Patent and Trademark Office.

Copyright 2006, Molecular Probes, Inc. All rights reserved. This information is subject to change without notice.